

To continue its program of quality and design improvement, the manufacturer reserves the right to change specifications, designs or prices without notice and without incurring obligation.

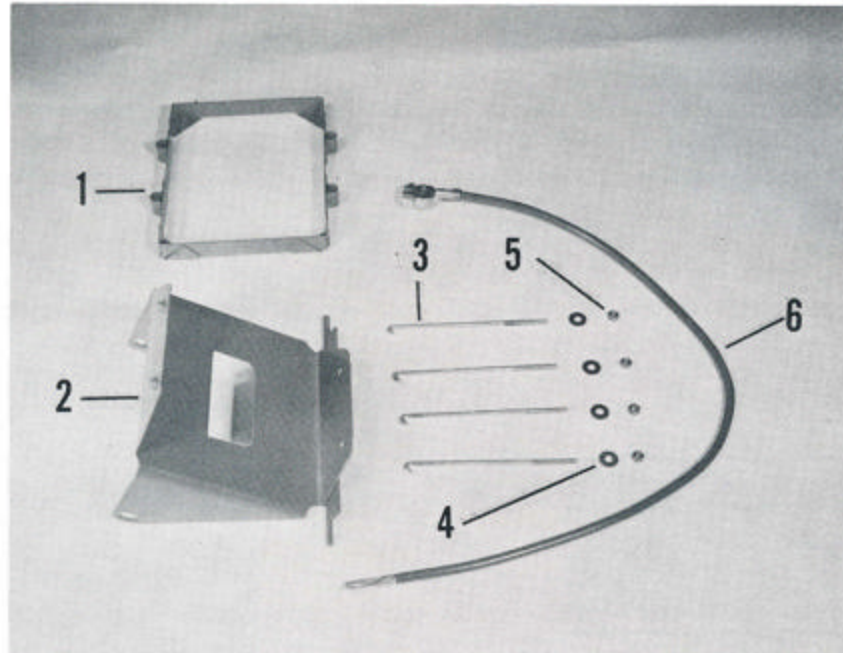


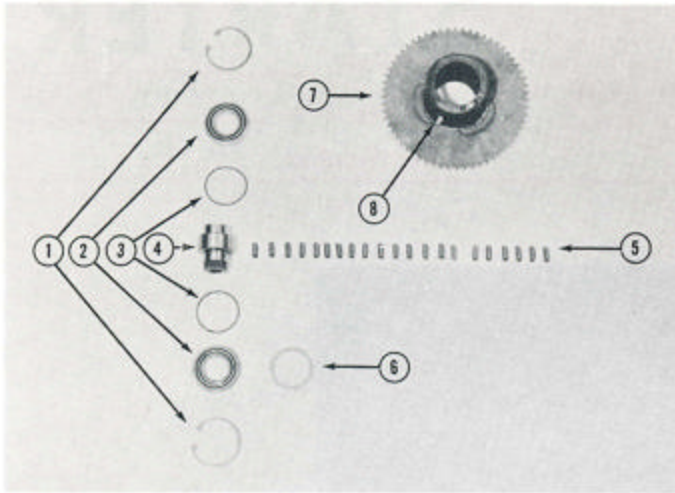
PLATE A

ITEM NO.	PART NO.	DESCRIPTION	NO. REQ'D
1	ST-133	Battery Cover	1
2	ST-106-A	Battery Mounting Bracket	1
3	ST-109	Battery Holddown Bolts	4
4	401-W	Battery Holddown Bolt Washer	4
5	201-N	Battery Holddown Bolt Nuts	4
6	ST-114	Battery to Switch and Ground Cable	2

PARTS NOT SHOWN FOR INSTALLING STARTER ON TRACTOR WITH SUPER HOOD

ST-134	Clip	2
ST-129	Rod	1
ST-130	Pivot Plate	2
ST-131	Catch	1
2RP-4	Roll Pin	1
N-10-ST-10C	Screw	8
248-N	Nut	8
N-10-ST-5	Screw	2
207-N	Nut	2

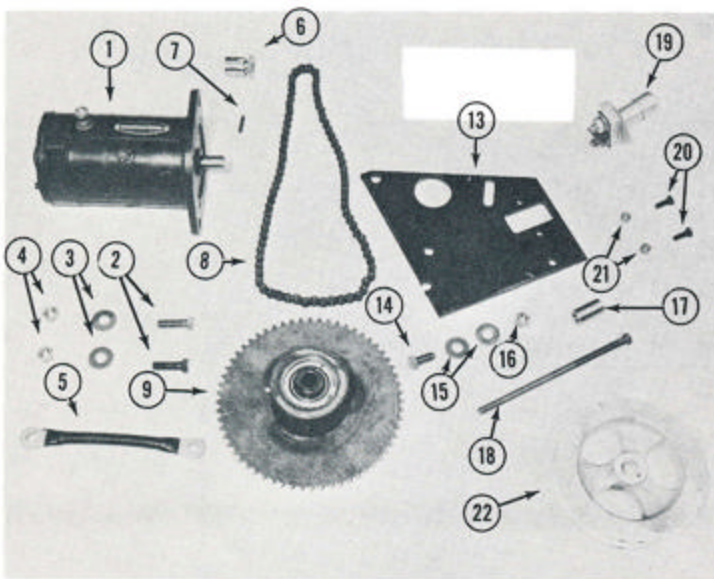
ILLUSTRATED PARTS LIST



ITEM NO.	PART NO.	DESCRIPTION
1	HE-103	Clutch Shell Bearing Retaining Rings
2	BB-111	Ball Bearings (Clutch Shell)
3	ST-120	Cam Roller Springs
4	ST-118	Drive Nut
5	ST-119	Clutch Cam Rollers
6	ST-122	Ball Bearing Shim
7	ST-100 & 117	Sprocket and Clutch Shell (60 Tooth) (Welded Assembly)
8	ST-125	Emergency Strap

PLATE B

STARTER



ITEM NO.	PART NO.	DESCRIPTION
1	St-111	Motor
2	112-S	Mounting Bolts
3	403-W	Motor Mounting Bolt Washer
4	205-N	Motor Mounting Bolt Nuts
5	ST-115	Switch to Motor Cable
6	ST-104	Motor Sprocket (8 Tooth)
7	HE-102	Motor Sprocket Pin
8	ST-108	Roller Chain
9	-----	Clutch and Sprocket Assembly Complete (See Plate B for Parts)
13	ST-105	Motor Mounting Plate
14	110-S	Motor Plate Bolt (To Fan Housing)
15	403-W	Motor Plate Bolt Washer (To Fan Housing)
16	205-N	Motor Plate Bolt Nut (To Fan Housing)
17	ST-135	Motor Plate Distance Spacer
18	143-S	Motor Plate Bolt (To Crankcase)
19	ST-112	Foot Switch
20	164-S	Switch Mounting Bolts
21	201-N	Switch Mounting Bolt Nuts
22	ST-121	Starter Fan Drive Pulley
NS	174-S	Starter Clutch Stop Bolt

PLATE C