

GRAVELY ROTARY PLOW

"PRINTED IN U.S.A."

ILLUSTRATED PARTS AND PRICE LIST

EFFECTIVE OCTOBER 1, 1957

PRICES SUBJECT TO CHANGE WITHOUT NOTICE

KEY: NS-NOT SHOWN NN-NO PART NUMBER, ORDER BY DESCRIPTION

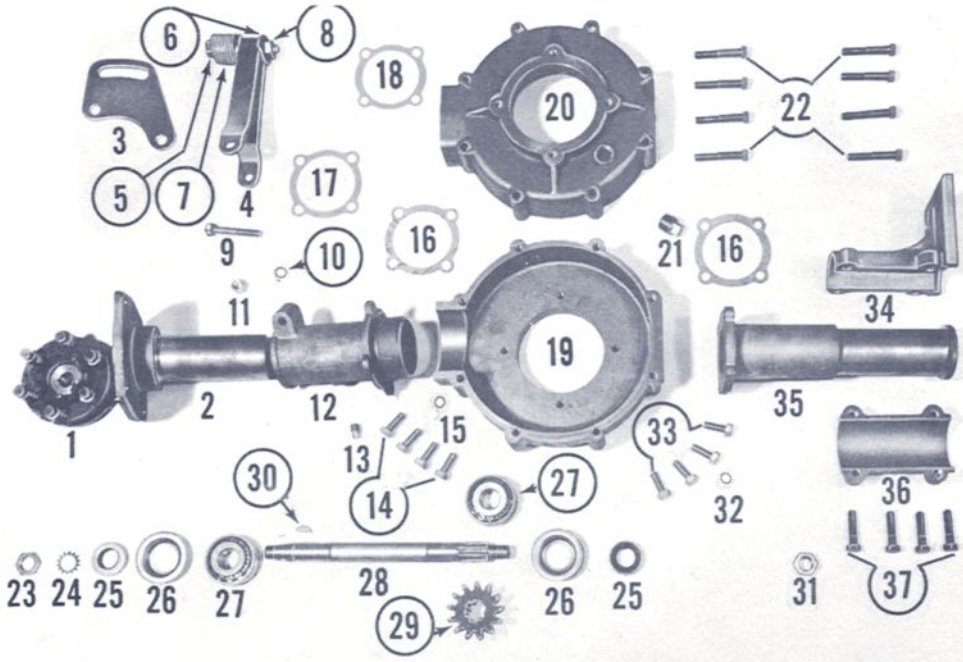


PLATE RP 1

Photo No.	Part No.	Description	Price
1		Slip Clutch Complete	10.31
2	M 101	Drive Shaft Housing	5.09
3	A 301	Adjusting Bracket	.66
4	A 302	Adjusting Handle	.66
5	172-S	Adjusting Bolt	.18
6	413-W	Adjusting Spacer	.03
7	410-W	Adjusting Bolt Washer	.01
8	211-N	Adjusting Bolt Nut	.04
9	151-S	Adjusting Handle Bolt	.08
10	305-W	Adjusting Handle Bolt Lk. Wshr.	.01
11	205-N	Adjusting Handle Bolt Nut	.03
12	M 102	Swivel Casting	4.68
13	701-P	Swivel Casting Drain Plug	.07
14	110-S	Bolt	.07
15	305-W	Swivel Casting Sec. Bolt Lk. Wshr.	.01
16	M 326	Gear Housing Gasket	.06
17&18	M 139	Bearing Adjusting Shims	
		.005 Bearing Adj. Shim	.09
		.020 Bearing Adj. Shim	.19
19&20	5330	Upper & Lower Gear Housg. Set	11.17
21	702-VP	Bevel Gear Housing Plug	.15
22	151-S	Gear Housing Bolt	.08
23	1304	Safety Clutch Nut	.15
24	309-W	Pinion Drive Shaft Lk. Wshr.	.02
25	L 126	Drive Shaft Oil Seal	.70
26	3151	Drive Shaft Oil Seal Retainer	.11
27	3147	Pinion Drive Shaft Bearing	3.96
28	M 308	Pinion Drive Shaft	2.20
29	5309-S	Bevel Pinion Gear	3.62
30	504-K	Bevel Pinion Gear Woodruff Key	.02
31	227-N	Pinion Drive Shaft Nut	.23
32	305-W	Gear Housing Ext. Bolt Lk. Wshr	.01
33	110-S	Bolt	.07
34	5326	Wheel Bracket Swivel	2.27
35	5331	Gear Housing Extension	4.29
36	5328	Wheel Bracket Cap	1.32
37	137-S	Wheel Bracket Swivel Bolt	.06

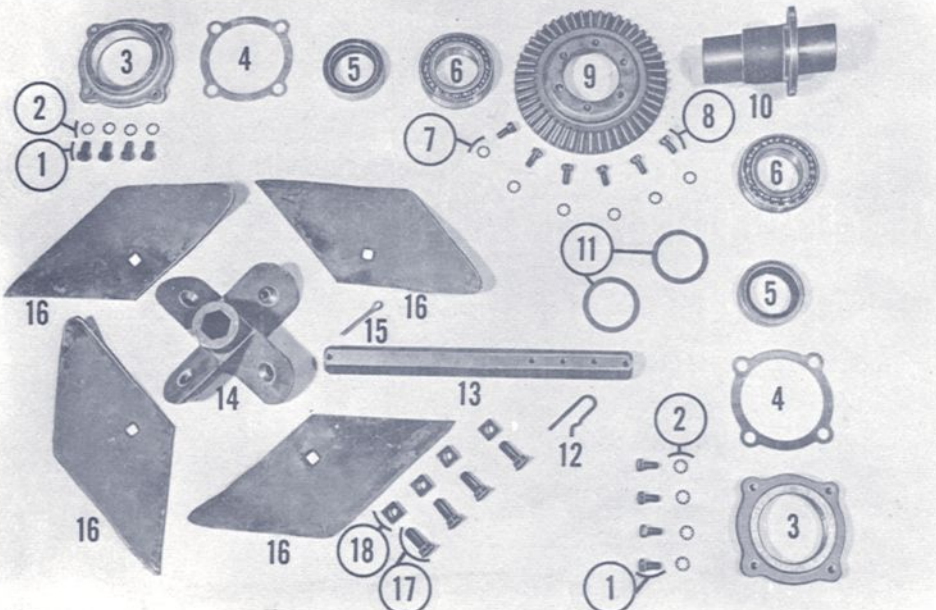


PLATE RP 2

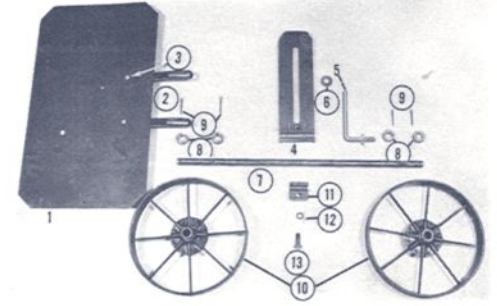


PLATE RP 3

Photo No.	Part No.	Description	Price	Photo No.	Part No.	Description	Price
1	121-S	Housing Bearing Cap Bolt	\$.06	10	5306	Bevel Gear Hub	5.06
2	305-W	Housing Bearing Cap Bolt Lk. Wshr.	.01	11	5413	Bevel Gear Hub Adjusting Shim	.07
3	5308	Housing Bearing Cap	1.98	12	5310-C	Rotor Axle Depth Adj. Pin	.08
4	5317	Bearing Adjustment Shims		13	5310	Rotor Axle (.05 per inch for each additional inch)	1.76
		.005 Bearing Adjusting Shims	.07	14	5312	Rotor Spider Hub	4.77
		.020 Bearing Adjusting Shims	.32	15	604-C	Rotor Axle Cotter Pin	.02
5	5318-A	Gear Housing Oil Seal	1.76	16	5322	Rotor Spade Cutter	1.53
6	2208	Bevel Gear Hub Bearing Comp.	6.59	17	153-S	1/2" x 1-1/2" No. 3 Plow Bolt	.10
7	305-W	Bevel Gear Lock Washer	.01	18	153-N	1/2" x 1-1/2" No. 3 Plow Bolt Nut	.02
8	121-S	Bevel Gear Bolt	.06				
9	5315	Bevel Gear	3.73				

Photo No.	Part No.	Description	Price
1	5324	Dirt Shield	1.76
2	2703	Dirt Shield Brace	.24
3	121-S	Dirt Shield Brace Bolt	.06
NS	305-W	Brace Bolt Lock Washer	.01
NS	205-N	Dirt Shield Brace Bolt Nut	.03
4	5303	Wheel Bracket	2.51
5	5325	Wheel Bracket Clamp Complete	.51
6	410-W	Wheel Bracket Clamp Screw Wshr.	.01
7	5311	Depth Wheel Axle	1.38
8	A 374	Axle Thrust Collar	.24
9	603-C	Axle Thrust Collar Cotter Pin	.01
10	5327	Depth Wheel	3.11
11	5304	Axle Clamp	.28
12	308-W	Axle Clamp Bolt Lock Washer	.01
13	152-S	Axle Clamp Bolt	.11