



LIFTABLE REAR HITCH

SECTION 1

Installation Instructions

1. Remove the four bolts and lock nuts that fasten the rear hitch brackets to the forward-reverse mounting plates on the tractor.
2. Fasten the liftable hitch weldment to the forward-reverse mounting plates with three of the bolts and nuts which were just removed. In the top mounting hole on the left end of the hitch weldment use the bushing and hex bolt from the hardware bag as shown in the illustration.

NOTE: See Item No. 16. When installing the liftable hitch on tractors without a grass catcher attachment, use Part No. 180188. If both a grass catcher and a liftable hitch will be used intermittently, the cross shaft weldment for the liftable rear hitch can remain in place all of the time. To attach the grass catcher attachment, remove all of the liftable hitch components except the cross shaft weldment and replace Part No. 180188 with 180192.

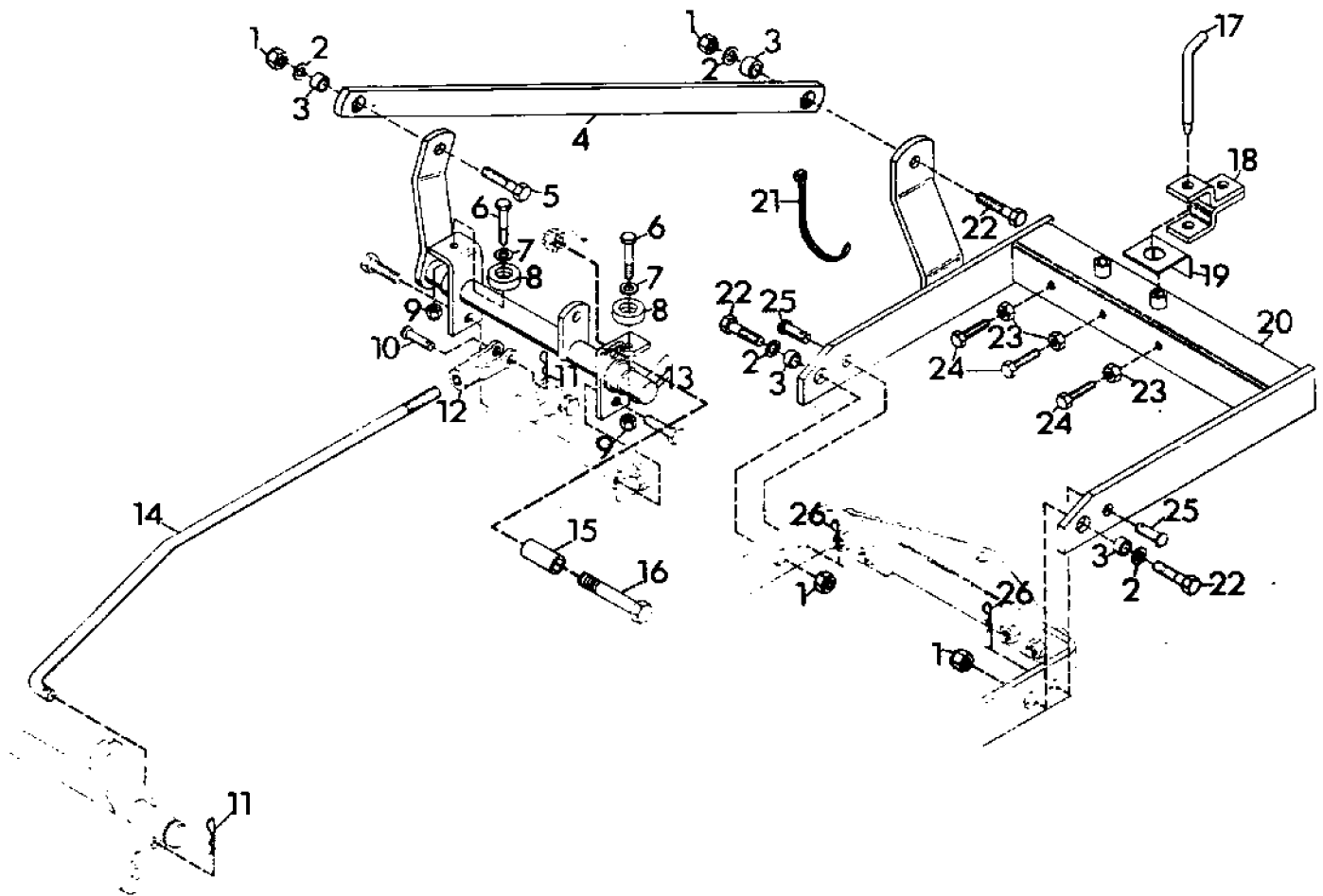
3. Put a flat washer in the large hole in the seat bumpers and fasten the seat bumpers to the hitch weldment with the 1/4x1.25 hex bolts.
4. Fasten the rear hitch weldment to the rear hitch arms of the tractor with the 1/2-13x1.75 hex bolts, bushings, flat washers, lock nuts, clevis pins and hair pin cotters as shown in the illustration.
5. Fasten the rear hitch strap to the liftable hitch weldment with the 1/2-13x2.00 hex bolt, bushing, flat washer and lock nut as shown in the illustration. The nut must be on the outside as shown.
6. Fasten the rear hitch strap to the rear hitch weldment with the 1/2-13x1.75 hex bolt, bushing, flat washer and lock nut as shown in the illustration. The nut must be on the outside as shown.
7. Put the end of the lift rod in the rear hole of the tractor lift and fasten with a hair pin cotter as shown in the illustration. Put the adjustable yoke on the other end of the lift rod and fasten the yoke to the hole in the tab on the hitch weldment with the clevis pin and hair pin cotter.

8. To adjust the liftable rear hitch:

- o Put the tractor lift in the raised position and disconnect the adjustable yoke from the hitch weldment.
- o Lower the seat pan weldment of the tractor. Lift the rear hitch until there is 1 inch (2.54 cm) distance between the rear hitch strap and the seat pan.
- o Hold the hitch strap in position and turn the adjustable yoke until it can be connected to the hitch weldment without moving the hitch weldment.

SECTION 2

Illustrated Parts and Parts List



ITEM NO.	PART NO.	QTY.	DESCRIPTION
1	435507	4	Nut, Lock 1/2-13
2	120396	4	Washer, Flat .531x1.062x.095
3	19260	4	Bushing, Pivot Casting
4	24453	1	Strap, Rear Hitch
5	180181	1	Bolt, Hex 1/2-13x2.00
6	180024	2	Bolt, Hex 1/4-20x1.25
7	120386	2	Washer, Flat .312x.734x.065
8	24357	2	Bumper, Seat
9	419454	2	Nut, Lock 1/4-20
10	138086	1	Pin, Clevis .500x1.213
11	15691	2	Pin, Cotter Hair
12	19091	1	Yoke, Adjustable
13	42136	1	Weldment, Lifiable Hitch
14	19092	1	Rod, Lift
15	11074	1	Bushing, .505x.74x1.438
16	180188	1	Bolt, Hex 1/2-13x2.75
	180192	1	Bolt, Hex 1/2-13x3.50
17	18864	1	Pin, Hitch
18	18866	1	Hitch, Rear Weldment
19	14949	1	Pad
20	24376	1	Weldment, Rear Hitch
21	10629	2	Tie, Cable
22	180179	3	Bolt, Hex 1/2-13x1.75
23	451519	3	Nut, Jam 3/8-16 Hex Heavy
24	14718	3	Bolt, Hex Special 3/8-16x3.00
25	20499	2	Pin, Clevis 5/8x1.125
26	10405	2	Pin, Hair