

GRAVELY *Technical* BULLETIN



BULLETIN NO: 823
DATE: April 27, 1960
TO: ALL DEALERS, DISTRIBUTORS, DEALER SALESMEN
SUBJECT: NEW POWER BARROW!

Gravely Users save time and effort with a NEW Gravely Attachment!

The Gravely Power Barrow hauls up to 5 cubic feet of sand, stones, cement, or other heavy loads. Moves it faster SAFER--puts it right where the operator wants it.

Just raise the Handle to dump. The Handle is designed to be always within easy reach of the operator.

The Power Barrow is of sturdy steel and cast-iron construction--made to handle the really tough hauling jobs. Attaches or removes from the Gravely Tractor with just four Bolts.

If an electric starter is used, it will be necessary to use the Side Battery Mount (part #ST-126).

No problem will arise if the User has no Starter Unit. If he does have a Unit, he must obtain a Side Battery Mount for his Battery.

Assembly Instructions are on reverse side of this Bulletin.

SPECIFICATIONS

Length: Front to back of Tray, 40", front to curve of handle, 72"

Width: 29" Height: Floor to top of Tray, 24-1/2"

Tray Capacity: Volume, 5 cu. ft., Load capacity, approx. 800 lbs.

Tray: 16 Gauge Steel

Tray Support: 3/16" Steel Plate

Tray and Caster Support: Cast (Gray) Iron

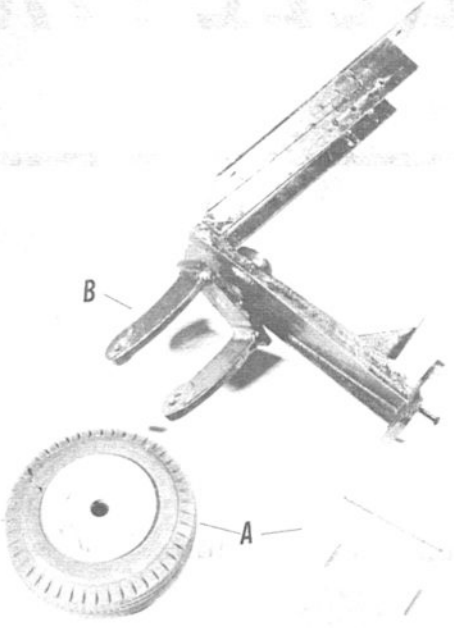
Caster Fork: Malleable Casting

Tire: 3.40/3.00 x 5, 4 ply Goodyear pneumatic tire and tube.

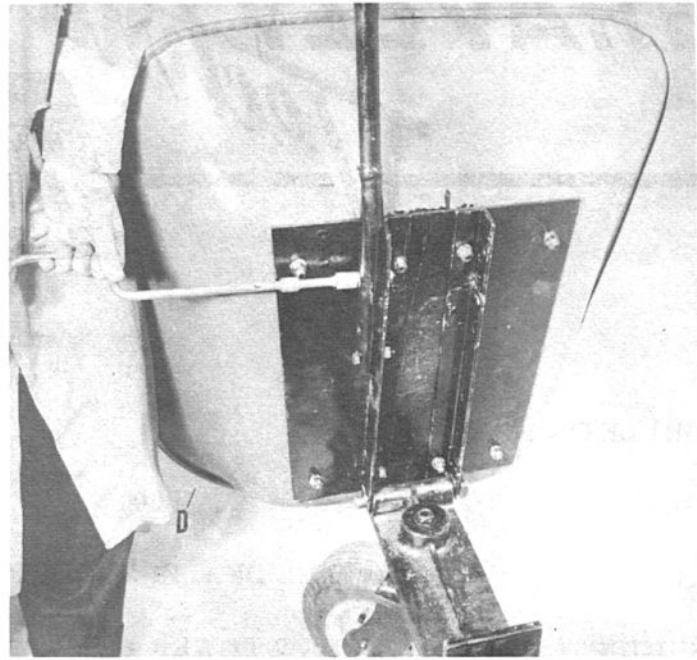
Bearings: Roller



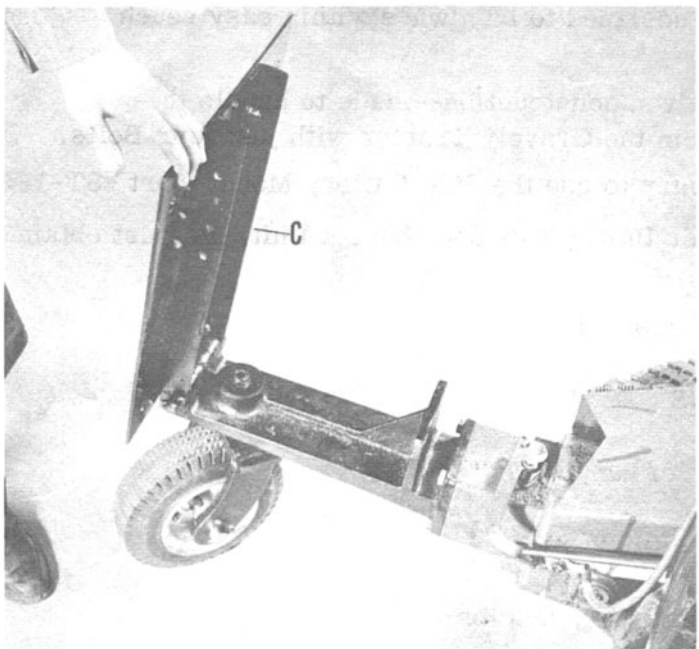
GRAVELY POWER BARROW ASSEMBLY INSTRUCTIONS



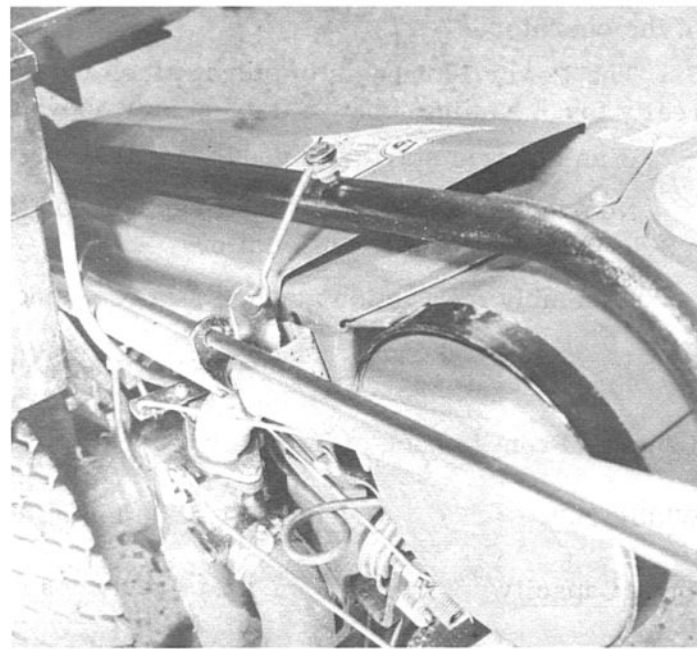
STEP 1. Mount Wheel and Axle Assembly (A) to Caster Fork (B). To accomplish--simply place Wheel inside Caster Fork, push Axle through openings and insert Pins.



STEP 3. Mount Tray (D) to Tray Support, using eight Bolts and Nuts to secure firmly. Insert Bolts through Tray side and screw Nuts tightly beneath. Attach Dumping Handle in position shown, make sure Bolts are tight.



STEP 2. Attach Tray and Caster Support Assembly to Tractor. Remove all Bolts in Tray Support (C). Place pin through special holes in Tray and Caster's Support and Caster Fork to steady Wheel while attaching. Remove pin to allow Wheel to swivel.



STEP 4. When working on slopes or other rough terrain, you may desire to use the Latch. Attach Bolt and Latch on Dumping Handle--secure Eye on Tractor Handle Bolt. A large and small Spacer is required to attach. You have to bend Eye slightly to work properly.